



Product Line
2021



Six of Evnroll's most distinctive models will now feature a choice of four different hosel designs

ER1V | ER2V | ER5V | ER7V | ER8V | ER11V

- The V-Series lets every golfer have their preferred hosel on their preferred Evnroll head design.
 1. **Short Slant** hosel neck produces more toe hang promoting a more rotational swing-path that releases through the hitting area. This slant neck design has a pin that fits inside the shaft allowing it to flow seamlessly into the putter head, a preferred look by better players.
 2. **Short Plumber Neck** hosel reduces toe hang and therefore reduces the rotation of the swing path. This plumber neck features a classic over-fit collar-type hosel with a vertical full-shaft offset presentation.
 3. **Long Plumber Neck** hosel further reduces toe hang and allows for a more straight-back-straight-through swing path. This plumber neck features a classic over-fit collar-type hosel with a vertical full-shaft offset presentation.
 4. **Long Slant** hosel neck design has a two-shaft offset with an additional two degrees of loft to accommodate Evnroll's new Midlock putter line



ER2V Short Slant



ER2V Short Plumber



ER2V Long Slant

ER2V MidBlade

A shorter, wider heel and toe weighted flange blade featuring a choice of four different hosels

ER2V Long Plumber



ER1V



ER5V



ER7V



ER8V

V Series

‘V’ stands for versatility. Each of the models available in the V Series are offered with a choice of four different hosels



ER11V

Flagship member of the new 2021 V-Series features the ultimate in versatility, forgiveness and performance with a clean, compact look.

- A choice of hosel options to customize toe hang to match your stroke arc
- Interchangeable rear weights to dial-in swing weight to match green speeds and weight preference
- Super-high MOI designed for forgiveness and performance in a compact, clean-looking mallet design.

The frontal body portion is black anodized 6061 aluminum and features a ball-sized gripping cavity directly behind the hitting area that positions the putters mass outward and rearward for improved MOI.

The 303 stainless steel weights are positioned to the extreme rearward outer edges to produce super-high MOI.

ER11V combines ultra-high MOI, V-Series hosel options and rearward adjustable weighting into a stunning high-performance mallet. This is by far the most customizable putter ever offered by Evnroll.



ER11V Long Plumber

ER11V Short Slant



ER11V Short Plumber



ER11V Long Slant



ER11V MOI Mallet

Adjustable high MOI Mallet featuring a choice of four different hosels



MIDLOCK™

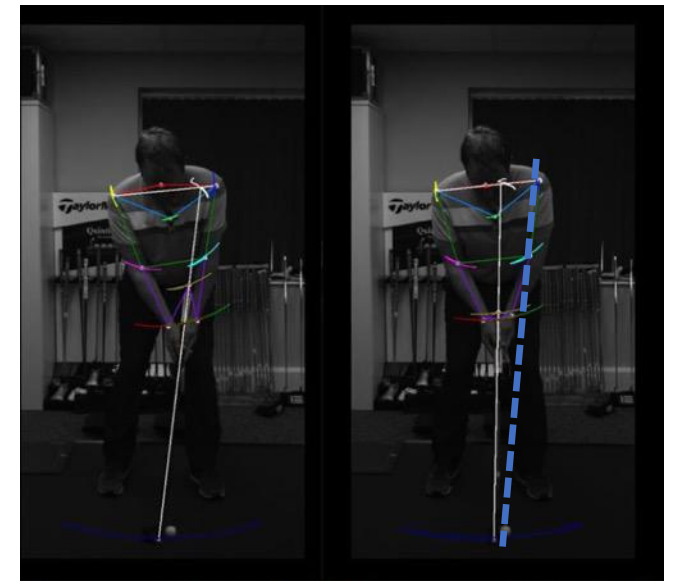
Armlock made easy

Our Midlock putters will bring Armlock to every golfer in an uncomplicated, user-friendly way.

The putters are just 5" longer than the length required for a conventional setup. The 5" extra pistol section is the part that extends above the hands. So if you use a 34" putter then you would use a 39" Midlock putter.

No more special shaft and heavy head weight. The secret is in the patented grip design. The new Midlock Grip features the deepest pistol dimension allowed by the USGA. By positioning the grip sideways the deep pistol pushes the shaft angle away from the mid-forearm reducing the typical 9 degrees of loft to just 4 degrees, similar to a simple forward press. This comfortable setup allows for an effortless one-piece putting stroke with no moving parts.

Midlock is available in four classic Evnroll models. One blade (ER2), two mallets (ER5 and ER8) plus one high MOI design (ER11).



Armlock vs Midlock



ER2V ML



ER5V ML



ER8V ML



ER11V ML

MIDLOCK™

EVNROLL®
PUTTERS

Putter Line 2021

ER1



ER2



ER5



ER7



ER8



ER10



ER11





ER2 Silver satin



ER2CS Center Shaft



ER2 MidBlade

A shorter, wider heel and toe weighted flange blade



ER5 Silver satin



ER5CS Center Shaft



2019
SLIGHT
ARC

ER5 Hatchback

A winged mallet design with a “hatched out” center section

 **EVNROLL**
PUTTERS



ER10 Outback

An ultra high MOI oversized mallet

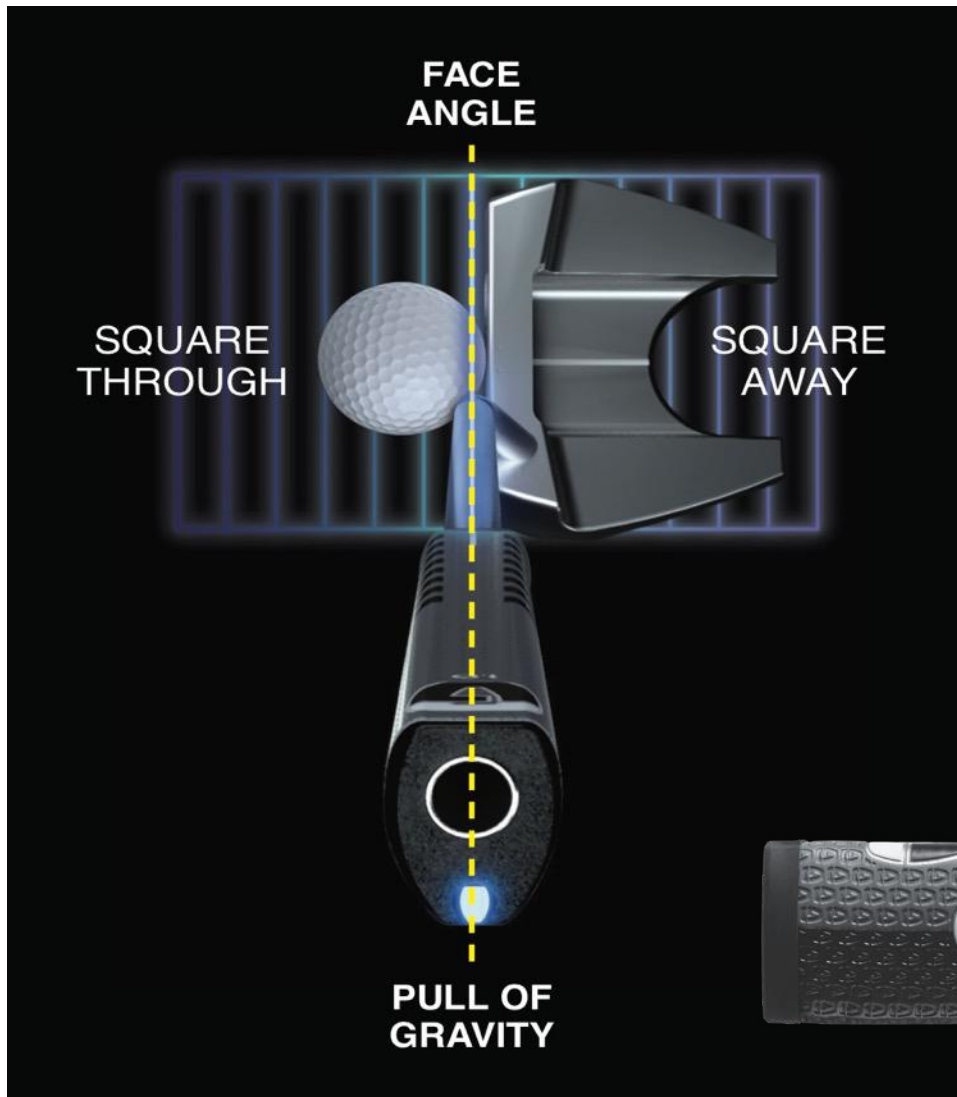


TourTac Grip

- New for 2021
- Replaces the non-taper 1.2 grip
- Popular shape, tacky feel



**More
innovative
products**



Gravity Grip

The patented **Gravity Grip** is a major breakthrough in putter grip technology. The body of the grip is ultralight EVA foam that weighs only 35 grams.

By placing a 70 gram steel rod along the entire length of the grip $\frac{1}{2}$ inch below the shaft, the hands can feel the precise angle of the face. The hands and the putter head are tied together creating a square zone before and after impact. **Feeling is believing.**





See your putter's loft instantly.

Too Much Loft



The ball will launch off the putter face and skip before rolling.

Zero Loft



Turns into negative loft on uphill putts.

Perfect Loft

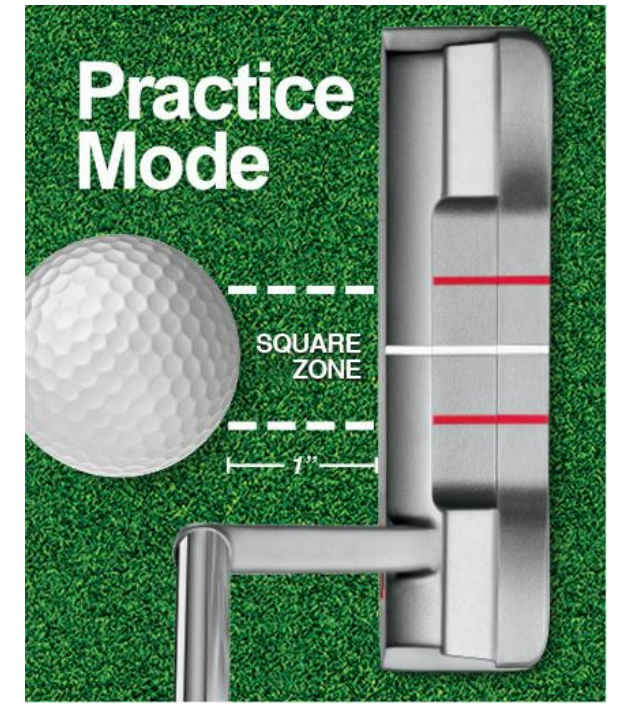
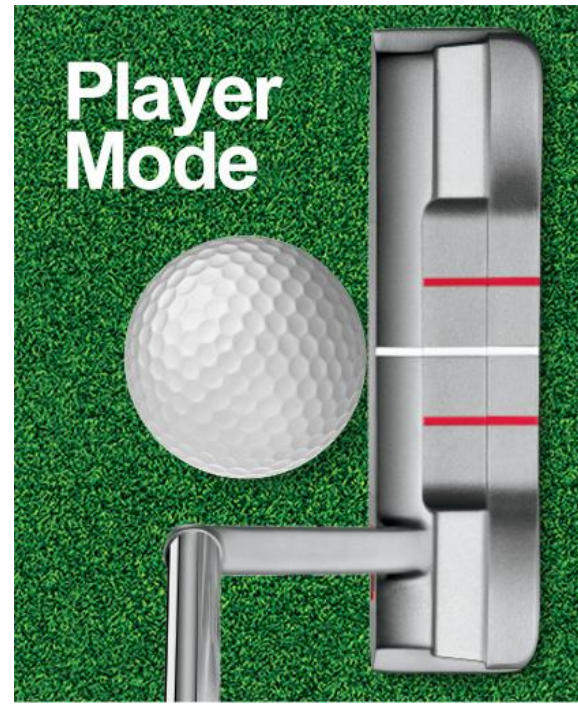


The ball will have a 3" launch and then assume an immediate roll.

The NEW RollBoard

The patented RollBoard from Evnroll is a velvet-covered board that measures 24" long by 4" wide. The velvet has a directional nap where the player simply brushes the nap towards the start position before hitting a putt. Once the putt is hit, the RollBoard will instantly reveal the roll characteristics of your golf ball as it comes off the face of the putter. No need for expensive high-speed cameras and viewing monitors. No time consuming setup and playback.

The RollBoard instantly and accurately displays how you roll the ball, the amount of launch, and the precise moment when speed and rotation match up to create true roll. The form factor of the RollBoard also makes it easily transportable and can be effectively used indoors and out as well as at home or on the road.



TourStroke Trainer

Stroke path putting trainer for all skill levels



Evnroll.com